

• Model no. 1351

COMBI TEST STAND

EN 1277

EN 1053



Leak tests on
waste water pipe
systems

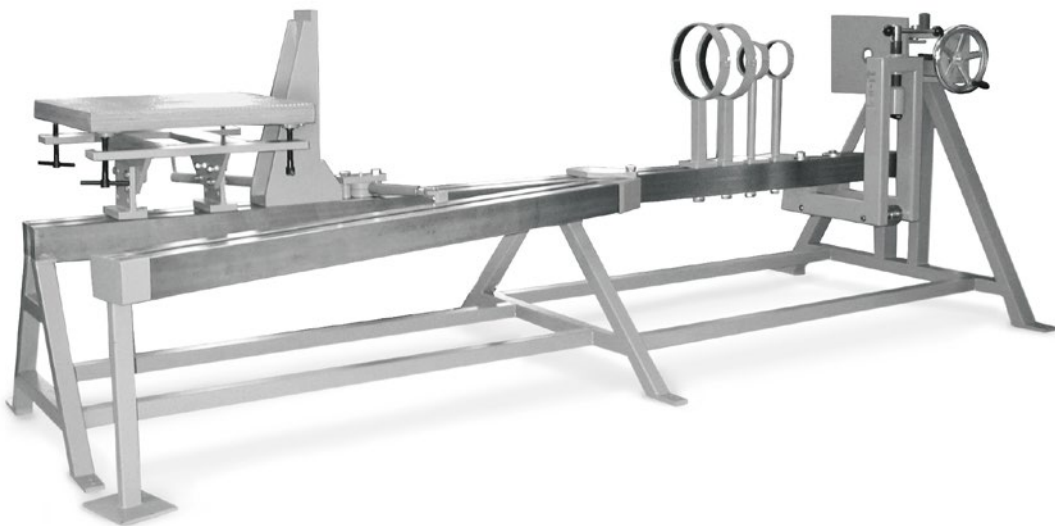
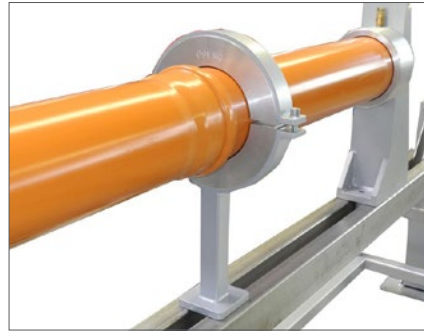
The combi test stand 1351 is used to carry out leak tests on waste water pipe systems in the diameter range DN 40 to DN 400. The modular design allows for step-by-step expansion in order to apply additional load types.

These include: Loading with internal overpressure, angular deflection, deformation, shear load and external overpressure.

The load types are described in the relevant standards and guidelines.

Flexibly combinable

- In addition to the supply unit, the basic device consists of a test bench with a deflection carriage attached to the front and the adjustable counter bearing. It absorbs the axial forces generated during the pressure tests.
- Specimen arrangements with bends and branches are fixed with the aid of the laterally mounted swivelling arm.
- The deflection carriage carries the holder for the front sealing cap. Movement is effected via a link (with spindle and handwheel) radially to the socket fastening.
- The scale attached to the deflection slide (angle degree graduation) facilitates adjustment. To enable deflection in a vertical direction, the entire device is rotatably mounted.
- The counter bearing with the second sealing cap and the fastening clamps can be moved on the double profiles of the test bench without great effort. This makes adapting to the dimensions of the specimen easier.



Standard features

- | | |
|---|--|
| <ul style="list-style-type: none"> The following tests can be carried out on pipes with the basic equipment: <ul style="list-style-type: none"> - Tightness up to 0.5 bar with slow pressure increase - Tightness with an angular deflection of up to 0.5 degrees - External overpressure up to 0.5 bar (due to vacuum in the test specimen) | <ul style="list-style-type: none"> The supply unit contains the pressure regulator, the vacuum pump for generating the external overpressure and the electronic control unit. |
| <ul style="list-style-type: none"> The test bench contains holders for the optionally available test kits | <ul style="list-style-type: none"> CE conformity |

Options

- | | |
|---|--|
| <ul style="list-style-type: none"> Endclosures | <ul style="list-style-type: none"> Fastening clamps |
| <ul style="list-style-type: none"> Cuffs for overpressure | <ul style="list-style-type: none"> Shaft support |
| <ul style="list-style-type: none"> Water absorption measurements on large prefabricated shafts are carried out standing on the floor next to the test bench. <ul style="list-style-type: none"> - Adjustable support for prefabricated shafts up to DN 500 - Shear load test add-on to test the behaviour of the pipe system under shear stress. - Squeezing devices D40 – D160 and D200 – D400 for deforming the pipes at the socket joint. | <ul style="list-style-type: none"> Additional closure sets and support clamps available on request. |

Version COMBI TEST STAND

		V1351-0008	V1351-0009
Permissible ambient temperature	°C	+5 to +30	
Permissible relative humidity	%	Max. 70 (non-condensing)	
Width of supply unit	mm	800	
Depth of supply unit	mm	800	
Height of supply unit	mm	1,780	
Weight of supply unit	kg	Approx. 115	
Width of test bench	mm	3,500	3,500
Depth of test bench	mm	1,400	1,400
Height of test bench	mm	1,250	1,250
Weight of test bench	kg	Approx. 700	Approx. 800
Voltage data		230 V, 50/60 Hz	230 V, 50/60 Hz