

Model no. 1411

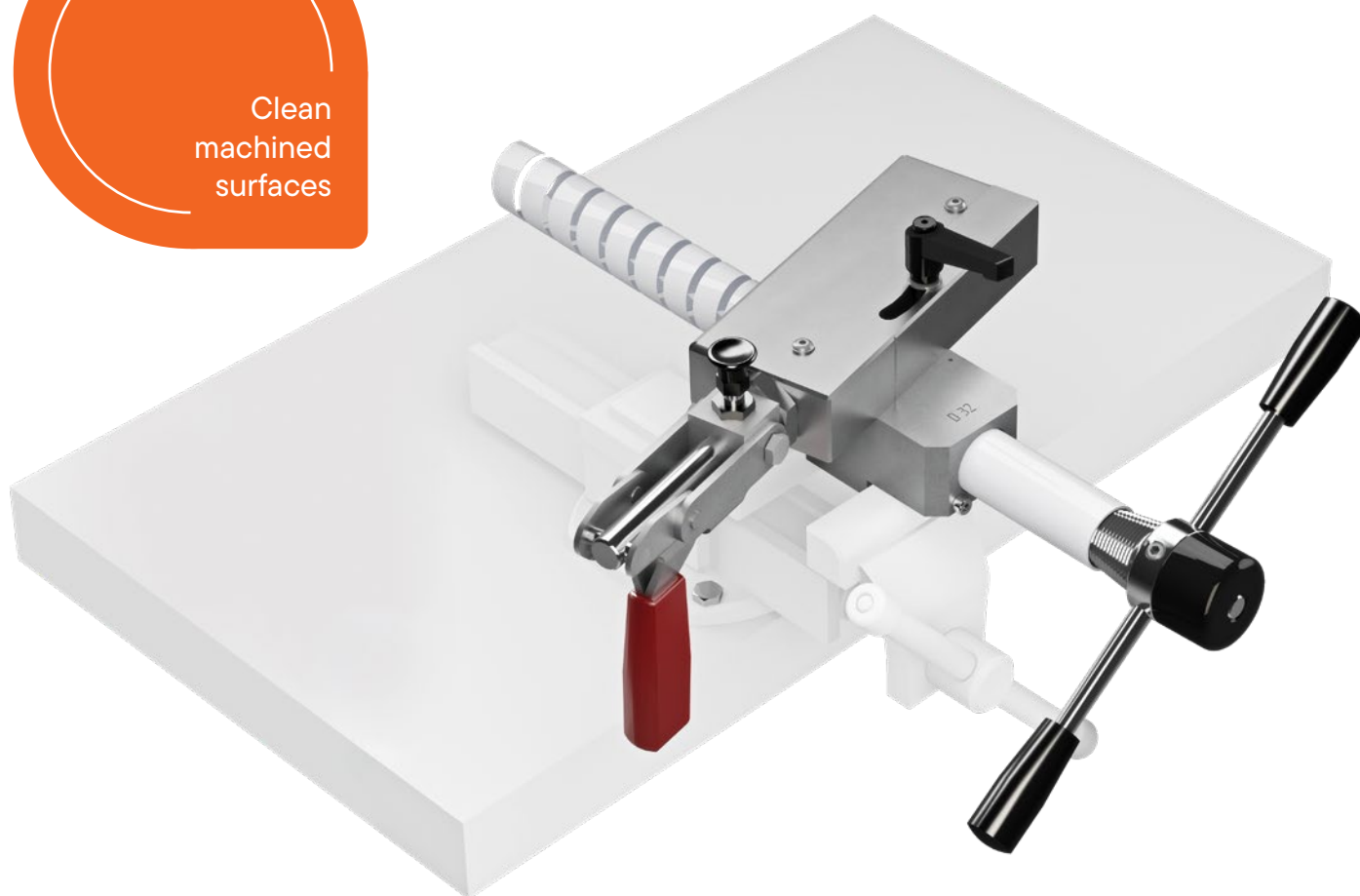
SPIRAL PIPE CUTTER

To determine the delamination between the different material layers of cross-linked polyethylene pipes, samples up to a diameter of 32 mm can be produced with clean machined surfaces using the IPT spiral pipe cutter.

DVGW W 542

ASTM F 1281

ASTM F 1282



Cut in no time at all

- As the ASTM standard differs from the DIN (DVGW) standard with regard to the cutting angle, IPT has developed a device on which the cutting angle can be set and which is therefore suitable for both standards.

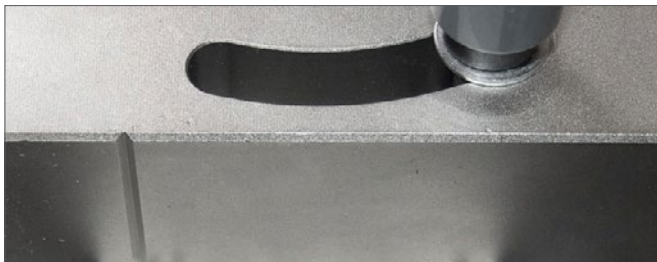
Test:

- The spiral pipe cutter is clamped in a vice for easy operation.
- A cone with a thread is screwed into the end of the pipe.
- Before turning, the cutter is pressed into the pipe – cutting is no longer necessary. The cone can be turned manually or mechanically (e.g. with a cordless screw-driver).
- At the end of the cutting process, the blade is pulled out of the pipe again – the sample can then be easily removed from the device.
- The spiral is now untwisted for inspection and, if necessary, further tests (peel test) are carried out.

- The ASTM standard stipulates a fixed cutting angle of 45°, according to DVGW W 542 the section must be 5-10 mm wide.



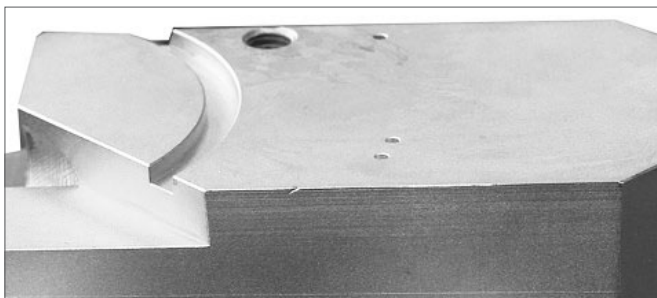
Cutter according to DVGW



The cutting angle can be adjusted to comply with DVGW and ASTM standards



Cutter according to ASTM



Basic device for holding the cutter holder according to DVGW and ASTM



Holding block with cone

Standard features

● Angle of intersection can be adjusted to comply with DVGW and ASTM standards	● Basic device for holding the cutter holder according to DVGW and ASTM
● Stainless steel support cone to enable the pipe to be turned easily	● Clamping aid for removing the cone from the pipe
● Pipe guide for spiral cutter Ø 12 mm to Ø 32 mm	● Further pipe guides on request
● CE conformity	

Version SPIRAL PIPE CUTTER

V1411-0010

Permissible ambient temperature	°C	+5 to +30
Permissible relative humidity	%	Max. 70 non-condensing
Width x Depth x Height	mm	309 x 105 x 190
Weight	kg	Approx. 5.5