

Competence creates Confidence.



• Model no. 1665

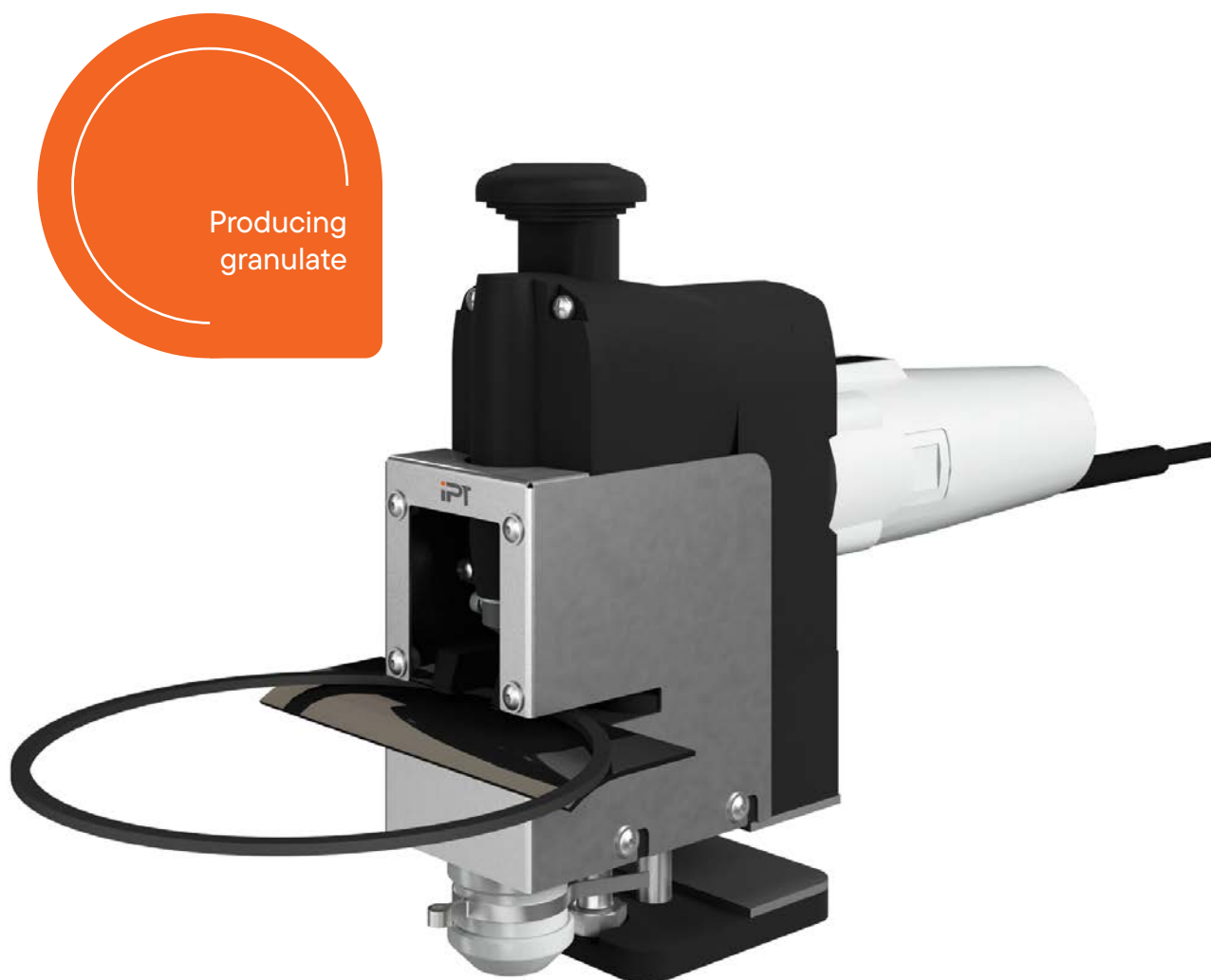
LABORATORY GRANULATOR

The laboratory granulator was developed for the production of granulates from plastic pipe slices or plastic sheets, for example for the determination of MFR/MVR values.

ISO 1133

ISO 1183

ASTM D 1505



Optimally prepared for the melt flow tests

- Processors of thermoplastics must carry out melt flow rate tests not only on the raw material, but increasingly also on the comminuted finished product in order to gain insight into the processing. Special requirements are placed on the granulate produced for the tests:
 - The material may only be heated slightly during comminution in order to avoid changes in the characteristic values and to ensure the reproducibility of the test results.
 - In some cases, the sample should only be taken from certain areas of the finished product; for example, in the case of thick-walled PE pipes, only from the inside or outside in order to be able to check uniform weldability.
- As these requirements cannot be met with laboratory mills or similar equipment, the samples are usually comminuted using hand tongs or a knife.
- The laboratory granulator model 1665 is an auxiliary device that makes these tasks much easier and safer.

Structure

- The laboratory granulator model 1665 is fixed to the table using a clamping device (Fig. 2).
- The device contains a punching unit whose punch (4 mm) is constantly moved via an eccentric with a stroke of approx. 15 mm.
- The slow stroke rate of approx. 300 strokes per minute prevents the granulate from heating up and at the same time enables the sample material to be fed manually without any issues.
- The punch and die plate are easily interchangeable.
- Various punch and die plate sizes possible in one device.
- A cover around the punching unit prevents operators from getting injured.



Standard features

● Clamping device	● Covering the punching unit for safety
● Punching unit	
● Adjustable punching speed	● Standard feature
● Punch and die plate easily interchangeable	● CE conformity


Options

● Punch and die plate sizes from 1.5 mm to 4 mm

Version **LABORATORY GRANULATOR**

Stroke rate	Strokes/ min	200 – 600
Permissible ambient temperature	°C	+5 to +30
Permissible relative humidity	%	Max. 70 non-condensing
Width x Depth x Height	mm	80 x 400 x 280
Weight	kg	Approx. 5
Voltage data		230 V, 50 Hz Special voltages on request

Accessories LABORATORY GRANULATOR

Product	Description	Model no.
	MFR/MVR tester	1709
	Tester for determining density	H3002