

Competence creates Confidence.



• Model no. 1679

OXYGEN TESTER

ISO 17455



Consistent and
reliable

This testing device is used to determine oxygen diffusion through the pipe wall of composite pipes. The testing device consists of a supply unit (built into an installation frame), a hot air oven and a drum for holding the test

specimen (length: 20 ± 0.5 m). The supplied trolley is used to move the test specimen. The test specimen is then sterilised and placed in the hot air oven for testing. It is connected via a quick-connect coupling system.

Precise determination of oxygen diffusion

The tester consists of the following main assemblies:

- Tester
- Hot air oven
- Trolley for mounting and moving the sample

● **Tester**

A closed system consisting of stainless steel parts of pipes, couplings, valves (only for method II) and taps, including the sample.

● **Heat cabinet**

The heat cabinet brings the sample up to the test temperature. To monitor the test conditions in the hot air oven, there is a thermometer on it. A barometer is supplied loose. The hot air oven is equipped with its own controller.

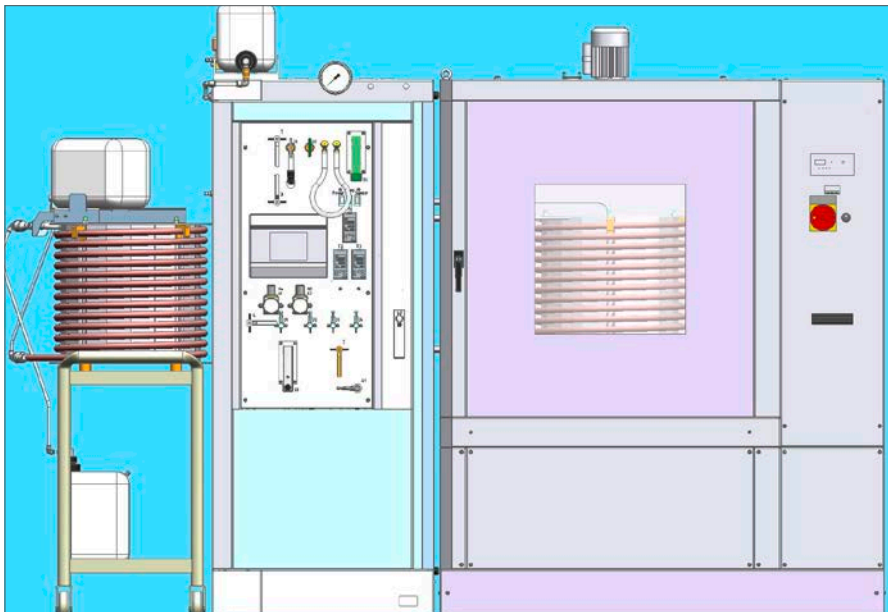
● **Trolley**

The trolley is used to move the sample. The sample is sterilised with alcohol and prepared for the test. The relevant hoses with couplings are included.

The sample is pushed into the hot air oven and attached for the test.

● **Drum**

The drum is intended for winding the sample. There are rollers on the bottom so that the drum can be easily pushed into the hot air oven. The sample is secured with claws at the top and bottom.



Standard features

● Tester	● Circulation pump
● Temperature sensor	● Flowmeter
● Barometer	● Installed analyser

Design of OXYGEN TESTER

V1679-0001

Technical data

Tester	Installed in an installation frame including heater for temperatures from 40 to 85°C ±2 K
Circulation pump	Output > 30 l/h
Temperature sensor	For water and air in the range from 40 to 85°C ±0.05°C
Flowmeter	0.15 to 0.5 l/min ±0.05
Barometer	From 965 to 1,035 mbar ±1
Installed analyser	For oxygen measurement with a temperature range from 40 to 85°C and a sensitivity of 1 ppb to 20 ppm; display range from 0.1 ppb to 80 ppm
Hot air oven temperature range	+7°C above room temperature to +85°C

Connections

Cooling water connection	G 3/4" (<15°C)
Wastewater connection	G 3/4"
Gas bottle connection	1/4" female thread

Measurements and weight

Tester (W x D x H)	1,620 x 890 x 2,030 mm, approx. 150 kg
Hot air oven (W x D x H)	830 x 730 x 1,170 mm, approx. 90 kg

Voltage data

Electrical connection	230 V, 50 Hz
-----------------------	--------------