

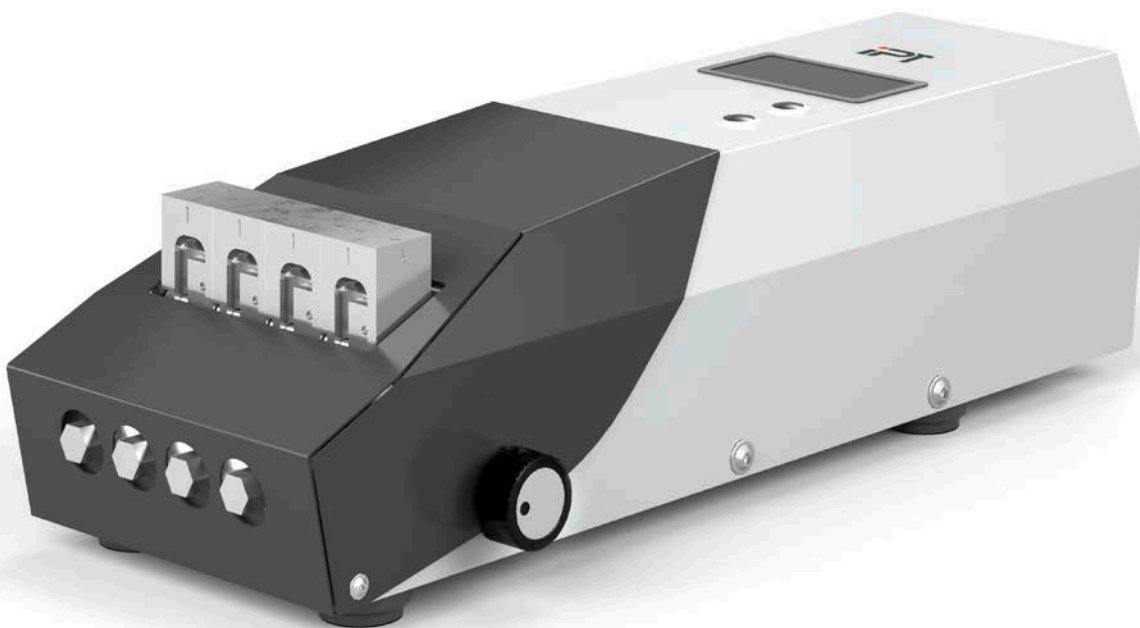
• Model no. 1808

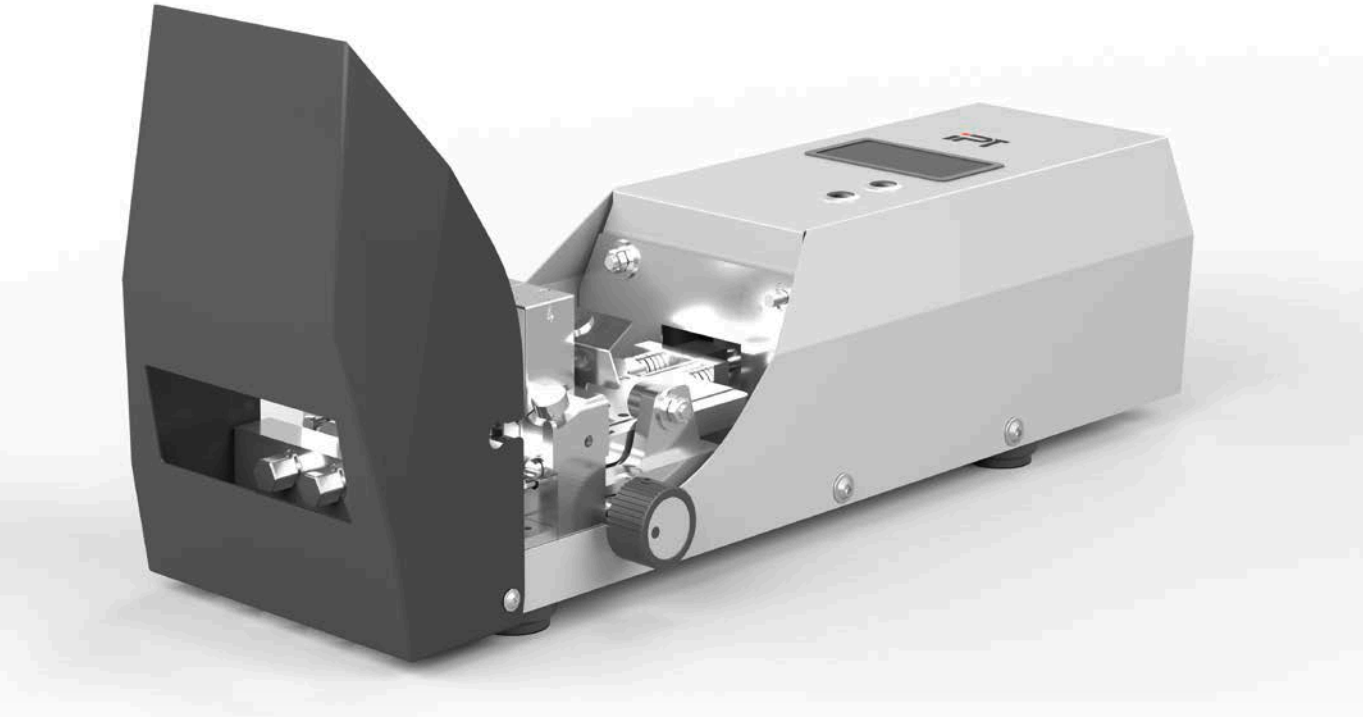
MOTORISED NOTCHING DEVICE FOR FNCT

ISO 16770

The newly developed Model 1808 electric notching device from IPT is designed for fast and precise notching of test bars for FNCT testing in accordance with ISO 16770. The cutting speed of max. 0.5 mm per minute complies with the currently valid standard. Four test bars can be notched simultaneously. The test bars are rotated manually for notching on all four sides. A digital counter reminds the user to replace the blade after 64 notching operations.

Quick and
precise





Standard features

- Easy mounting of test bars and blade
- Simultaneous notching of four test bars possible
- Fast and precise notching of test bars according to ISO 16770
- Blade driven by a stepper motor enables a cutting speed of 0.5 mm/min.
- Integrated digital counter provides an overview of the number of notches made

Options

- Spare blades

**Design of
MOTORISED NOTCHING DEVICE FOR FNCT**

Max. Number of test rods		4
Max. Cutting speed	mm/min	0,5
Test rod dimensions		acc. ISO 16770 Type A / B / C
Permissible ambient temperature	°C	+15 to +35
Permissible relative humidity	%	max. 70 non-condensing
Noise emission	dB(A)	< 70
Dimensions (W x D x H)	mm	195 x 496 x 134
Weight	kg	12
Voltage data		100 - 240 V, 50/60 Hz special voltage upon request